

## A SOFT SPRING SWEATER FOR BABY



Mixed and timeless, this little ecru sweater with an openwork fancy stitch is the ideal birth gift for girl or boy. Follow all of our explanations for knitting from 3 months to 24 months.

**Sizes:** 3 months (in pink) – 6 months (in green) – 12 months (in yellow) – 18 months (in purple) – 24 months (in blue)

### Equipment

- Needles n ° 3,5
- 1 wool needle

### Points employed

Ribs 1/1 and Jersey place

Simple overlock: slip one stitch from the right side, knit the next stitch from the right side, pass the slip stitch over the knitted stitch.

Fancy

stitch : openwork grid Number of stitches for multiple symmetry of 2 + 1 + 1 selvedge stitch at each end

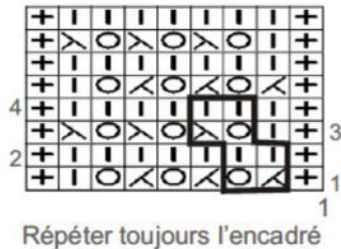
1st row: (work area): 1 edge stitch, \* 2 stitches together at the right side, 1 yarn over \*; repeat from \* to \*; finish with 1 stitch, 1 edge stitch

2nd and 4th rows: all wrong side (stitches and throws)

3rd row: 1 selvedge stitch, 1 place stitch, \* 1 yarn over, 1 single overlock \*; repeat from \* to \*; finish with 1 edge stitch.

Always repeat these 4 rows

### Diagramme point fantaisie



+ = maille lisière

| = maille endroit sur l'endroit ou envers sur l'envers

○ = jeté

< = 2 mailles ensemble à l'endroit sur l'endroit

> = surjet simple endroit sur l'endroit

### Sample

Important: it is essential to make a knitted fabric with the right dimensions.

1 square of 10 cm fancy stitch (see stitch and diagram), needles n ° 3,5 = 21 stitches and 45 rows.

### Production

#### BACK

• Cast on: **51 stitches (3 months) – 57 stitches (6 months) – 61 stitches (12 months) – 65 stitches (18 months) – 69 stitches (24 months)**, needles no. 3,5, knit a few rows of stocking st and then continue with LIN color in fancy stitch (see diagram).

• At **14 cm (3 months) – 16 cm (6 months) – 18 cm (12 months) – 19 cm (18 months) – 20 cm (24 months)** in fancy stitch height, form the armholes by folding back on each side every 2 rows: 1 x 3 stitches and 2 x 1 stitch.

There are: **41 stitches (3 months) – 47 stitches (6 months) – 51 stitches (12 months) – 55 stitches (18 months) – 59 stitches (24 months)**

• At **24 cm (3 months) – 27 cm (6 months) – 30 cm (12 months) – 32 cm (18 months) – 34 cm (24 months)** in fancy stitch height, form the shoulders by folding down on each side every 2 rows:

**3 x 2 stitches (3 months)**

**1 x 2 stitches and 2 x 3 stitches (6 months)**

**3 x 3 stitches (12 months)**

**2 x 3 stitches and 1 x 4 stitches (18 months)**

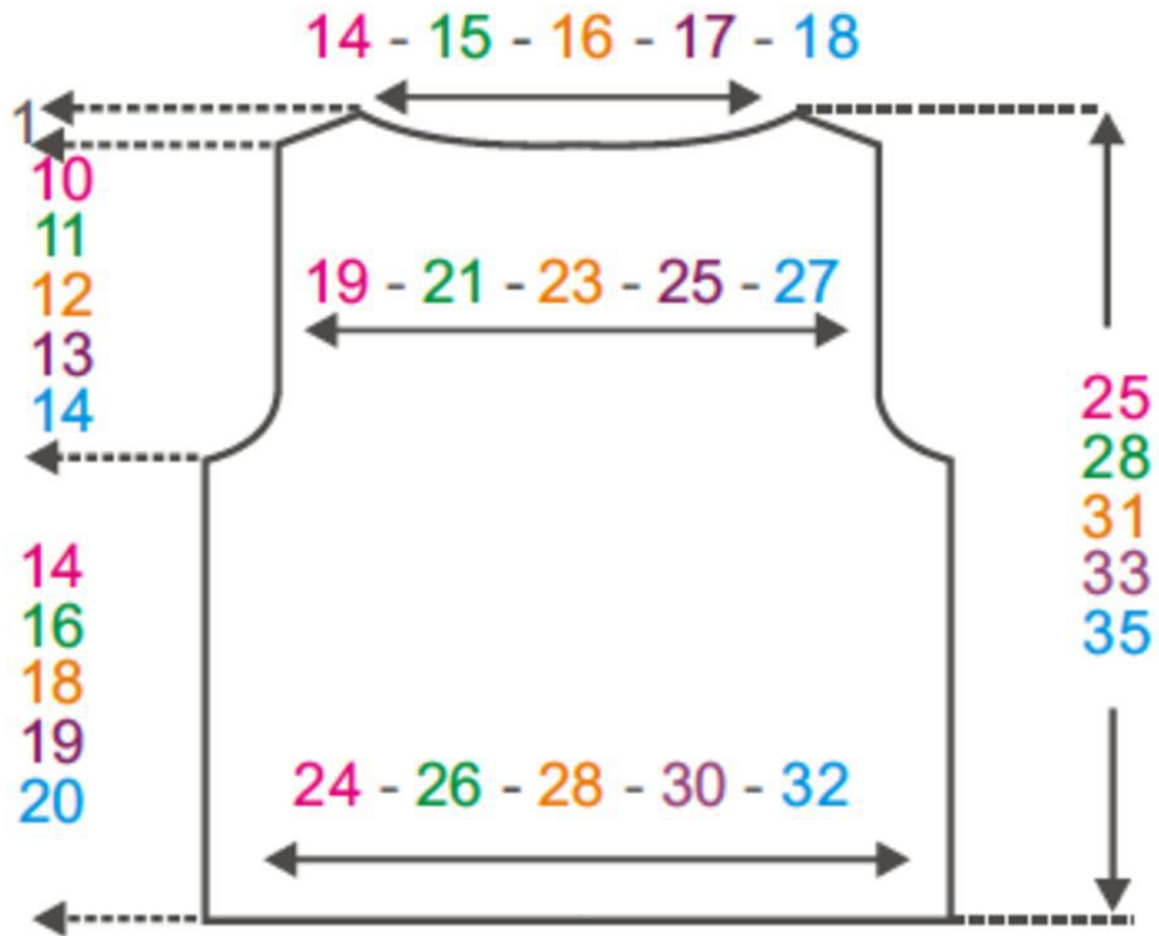
**1 x 3 meshes and 2 x 4 meshes (24 months)**

• At the same time, form the neckline (see advice about cast off stitches by groups) by folding the **11 stitches (3 months) – 13 stitches (6 months) – 15 stitches (12 months) – 17 stitches (18 months) – 19 stitches (24 months)** central then continue one side at a time, folding the neck side 2 rows higher: 1 x 9 stitches.

Finish the second side of the neckline.

Unravel the rows of jersey in another color from the start and loosely cast off all sts

# Patron dos



## IN FRONT OF

• Cast on: **51 stitches (3 months) – 57 stitches (6 months) – 61 stitches (12 months) – 65 stitches (18 months) – 69 stitches (24 months)**, needles no. 3,5, knit a few rows of stocking st and then continue with LIN color in fancy stitch (see diagram).

• At **14 cm (3 months) – 16 cm (6 months) – 18 cm (12 months) – 19 cm (18 months) – 20 cm (24 months)** in fancy stitch height, form the armholes by folding back on each side every 2 rows: 1 x 3 stitches and 2 x 1 stitch.

There are: **41 stitches (3 months) – 47 stitches (6 months) – 51 stitches (12 months) – 55 stitches (18 months) – 59 stitches (24 months)**

• At **21 cm (3 months) – 24 cm (6 months) – 26 cm (12 months) – 28 cm (18 months) – 30 cm (24 months)** of fancy stitch height, form the neckline (see stitch advice cast off in groups) by folding back the **9 stitches (3 months) – 11 stitches (6 months) – 11 stitches (12 months) – 13 stitches (18 months) – 15 central stitches (24 months)** then continue one side at a time folding down the neckline every 2 rows:

**1 x 3 stitches, 2 x 2 stitches, 2 x 1 stitch and 4 rows higher: 1 x 1 stitch. (3 months)**

**1 x 3 stitches, 2 x 2 stitches, 2 x 1 stitch and 4 rows higher: 1 x 1 stitch. (6 months)**

1 x 3 stitches, 2 x 2 stitches, 3 x 1 stitch and 4 rows higher: 1 x 1 stitch. (12 months)

1 x 3 stitches, 2 x 2 stitches, 3 x 1 stitch and 4 rows higher: 1 x 1 stitch. (18 months)

1 x 3 stitches, 2 x 2 stitches, 3 x 1 stitch and 4 rows higher: 1 x 1 stitch. (24 months)

• At 24 cm (3 months) – 27 cm (6 months) – 30 cm (12 months) – 32 cm (18 months) – 34 cm (24 months) in fancy stitch height, form the shoulder by folding down armhole side every 2 rows:

3 x 2 stitches (3 months)

1 x 2 stitches and 2 x 3 stitches (6 months)

3 x 3 stitches (12 months)

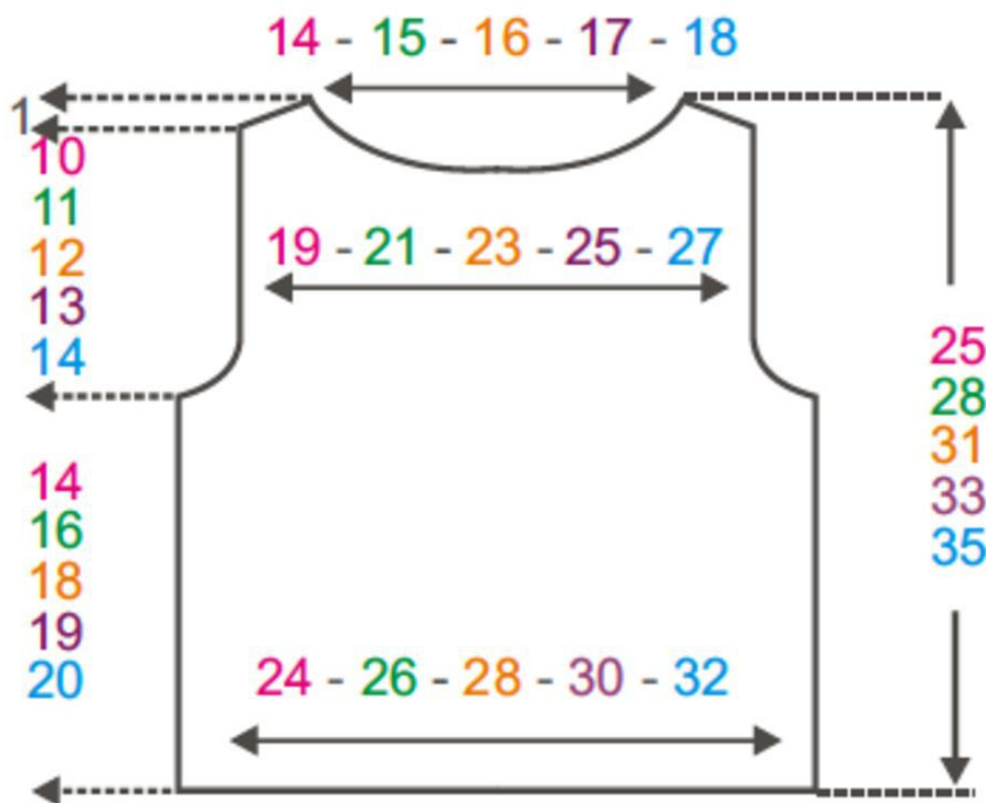
2 x 3 stitches and 1 x 4 stitches (18 months)

1 x 3 meshes and 2 x 4 meshes (24 months)

Finish the second side of the neckline.

Unravel the rows of jersey in another color from the start and loosely cast off all sts

## Patron devant



## SLEEVES

• Cast on: 38 stitches (3 months) – 40 stitches (6 months) – 42 stitches (12 months) – 44 stitches (18 months) – 46 stitches (24 months), color LIN, needles size 3.5, knit ribs 1/1 for 2 cm.

• Continue in pattern (see diagram) by making 1 decrease on the 1st row

We have: 37 stitches (3 months) – 39 stitches (6 months) – 41 stitches (12 months) – 43 stitches (18 months) – 45 stitches (24 months)

• Increase on each side:

every 18 rows: 2 x 1 stitch. (3 months)

every 16 rows: 3 x 1 stitch. (6 months)

every 14 rows: 3 x 1 stitch and every 12 rows: 2 x 1 stitch. (12 months)

every 14 rows: 2 x 1 stitch and every 12 rows: 4 x 1 stitch. (18 months)

every 12 rows: 6 x 1 stitch and 10 rows higher: 1 x 1 stitch. (24 months)

• At 12.5 cm (3 months) – 14.5 cm (6 months) – 17.5 cm (12 months) – 19.5 cm (18 months) – 20.5 cm (24 months) after ribs, round off by folding back on each side every 2 rows:

2 x 2 stitches, 5 x 1 stitch and 2 x 2 stitches (3 months)

3 x 2 stitches, 3 x 1 stitch and 3 x 2 stitches (6 month)

1 x 4 stitches, 2 x 2 stitches, 3 x 1 stitch, 2 x 2 stitches and 1 x 3 stitches (12 months)

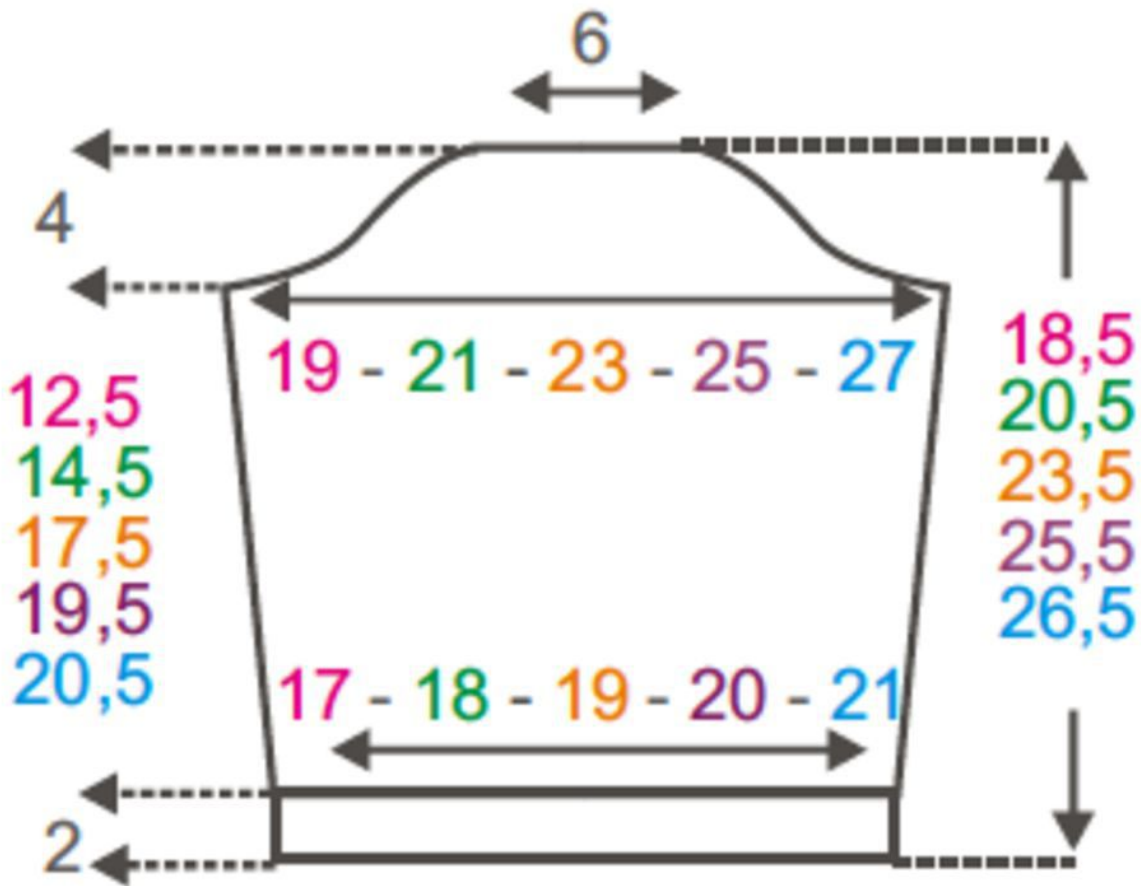
1 x 4 stitches, 1 x 3 stitches, 1 x 2 stitches, 3 x 1 stitches, 2 x 2 stitches and 1 x 4 stitches (18 months)

1 x 4 stitches, 1 x 3 stitches, 2 x 2 stitches, 2 x 1 stitch, 1 x 2 stitches, 1 x 3 stitches and 1 x 4 stitches (24 months )

• At 16.5 cm (3 months) – 18.5 cm (6 months) – 21.5 cm (12 months) – 23.5 cm (18 months) – 24.5 cm (24 months) after rib, cast off the remaining 15 stitches.

Knit the second similar sleeve

## Patron manches



### ASSEMBLY

Put the different pieces of the sweater to the measurements of the patterns and send steam.

Make the different seams.

Sew shoulder, side and sleeve seams.

Fit these to the armholes